



Addendum Number 2

Date: March 19, 2018
Project: St Maries Ambulance Building - Lower Level Remodel
St Maries, Idaho
Project #: 16006

1
2 Notice: It is the Contractor's responsibility to notify all bidders of information included herein
3 pertinent to those bids.
4

5 **THE FOLLOWING CONTAINS ADDITIONS, DELETIONS OR MODIFICATIONS TO THE SPECIFICATIONS AND**
6 **DRAWINGS. THIS ADDENDUM IS HEREBY MADE PART OF THE CONTRACT DOCUMENTS TO THE SAME**
7 **EXTENT AS THOUGH IT WERE ORIGINALLY INCLUDED THEREIN.**
8

GENERAL INFORMATION

- 9
10
11
12 #2-G1 Liquidated damages - At this time no liquidated damages are identified as the final project
13 schedule is to be determined based upon final contract negotiations. Project funding should be
14 available and the lower level vacated by the owner on or around April 16, 2018.
15
16 #2-G2 AIA Bid bond form - A310 or similar is acceptable.
17
18 #2-G3 Architects approximate estimate - Estimated at about \$200,000
19
20 #2-G4 As verified with the city attorney - Applicable taxes shall be included per the Idaho State Tax
21 Commission guidelines as indicate on the bid form. Davis Bacon and proof of certified payroll
22 are not required for this project. Wage rates shall meet state department of labor standards.
23
24 #2-G5 Bid Form - See attached revised Bid Form with line item for Add Alternate #1 - removal and
25 replacement of existing HVAC system (Design Build). Bid form must be completed legibly. No
26 substitute formats will be accepted.
27
28 #2-G6 The Pre-Bid Walk Thru Meeting Minutes serve as Addendum 1.
29

ARCHITECTURAL

SPECIFICATIONS

- 30
31
32
33
34
35 #2-A1 SECTION 09 6880 CARPET
36 REPLACE: in entirety with Section 09 6816 Sheet (Roll) Carpeting
37
38

Addendum Number 2

St Maries Ambulance Building - Lower Level Remodel
16006

March 19, 2018
Page 2

DRAWINGS

#2-A2 A2.3 REFLECTED CEILING PLAN

PROVIDE: One hour rated horizontal separation between the upper and lower floors. See AC-3, attached.

#2-A3 A4.1 EXTERIOR ELEVATION/DETAILS

Elevation Notes

CLARIFY: Number 8 doesn't apply where the existing garage door openings are being infilled.

Coded Notes

CLARIFY: Trim and Base may be LP Smart Side (or equal) as indicated per the documents.

CLARIFY: Note 14 - Match materials at upper floor entry door canopy. Roofing material at upper canopy is composition shake roofing (GAF Timberline or equal).

East Elevation

ADD: Coded notes 7 and 10 as shown on AC-2, attached, to each infill section at the existing garage door openings.

#2-A4 A6.1 INTERIOR ELEVATIONS/FINISH SCHEDULE

5/A6.1 Conference Room -101S

ADD: Upper cabinets, see attached AC-1.

MECHANICAL/ELECTRICAL (Design Build)

#2-MEP1 Remove and replace the existing sewer pump at the existing location with a new unit of equal or greater specification. New pump shall have an alarm and be in compliance with applicable codes at the time of construction. Work is to be inclusive of complete installation and start up including all materials, labor and utilities required.

#2-MEP2 Remove and replace the existing heating and cooling unit with a new unit. Run a new main trunk line down the center of the conference room with laterals as required. Provide for cold air return as needed. Provide (1) new programmable thermostat. Remove the existing duct work in entirety. Work is to be inclusive of complete installation and start up including all materials, labor and utilities required.

#2-MEP3 New light fixtures, coded notes 2 and 3, to match existing fixture type, or equal, in upper level.

END OF ADDENDUM 2

BID FORM - STIPULATED SUM (SINGLE PRIME CONTRACT)

PROPOSAL FOR:

St Maries Ambulance Building - Lower Level Remodel
The City of St Maries
St Maries, Idaho

Note: All bidders must complete this form and return it to City Hall, The City of St Maries, 602 College Avenue, St Maries ID 83861. Bids will be opened at **10:00 am on March 22, 2018.**

All bids shall be sealed and addressed to: Kriss Gibson, City of St Maries, 602 College Avenue, St Maries ID 83861.

Bidder's Firm Name: _____

Bidder's Address: _____

Telephone: _____ Fax: _____

Bidder's Contact Name: _____

Idaho State Public Works Contractor's Registration Number: _____

Expiration date of License: _____

The undersigned Bidder proposes to perform all Work for the applicable Contract, in accordance with the Contract Documents, for the following sums:

BASE BID (include applicable taxes per the Idaho State Tax Commission Guidelines):

ALL LABOR AND MATERIALS, for the sum of \$ _____

Sum in words: _____

ADD ALTERNATE #1 - Removal and replacement of existing HVAC system - Design Build (include applicable taxes per the Idaho State Tax Commission Guidelines):

ALL LABOR AND MATERIALS, for the sum of \$ _____

Sum in words: _____

Addenda received: _____

List the following subcontractors to which subcontracts will be issued for the stated trade:

1. PLUMBING

Name of Firm: _____

Address: _____

Telephone: _____

Contact Person: _____

Idaho State Public Works Contractor's Registration No.: _____

2. HVAC

Name of Firm: _____

Address: _____

Telephone: _____

Contact Person: _____

Idaho State Public Works Contractor's Registration No.: _____

3. ELECTRICAL

Name of Firm: _____

Address: _____

Telephone: _____

Contact Person: _____

Idaho State Public Works Contractor's Registration No.: _____

BIDDER'S CERTIFICATION

The Bidder hereby acknowledges that the following representations in this bid are material and not mere recitals:

1. The Bidder has read and understands the Contract Documents and agrees to comply with all requirements of the Contract Documents, regardless of whether the Bidder has actual knowledge of the requirements and regardless of any statement or omission made by the Bidder which might indicate a contrary intention.
2. The Bidder represents that the bid is based upon the Standards specified by the Contract Documents.
3. The Bidder has visited the Project site or has not visited the site at his/her own risk, become familiar with local conditions and has correlated personal observations about the requirements of the Contract Documents. The Bidder has no outstanding questions regarding the interpretation or clarification of the Contract Documents.
4. The Bidder and each Person signing on behalf of the Bidder certifies, and in the case of a bid by a joint venture each member thereof certifies as to such member's entity, under penalty of perjury, that to the best of the undersigned's knowledge and belief: (a) the Base Bid, any Unit Prices and any Alternate bid in the bid have been arrived at independently without collusion, consultation, communication or agreement, for the purpose of restricting competition as to any matter relating to such Base Bid, Unit Prices or Alternate bid with any other Bidder; (b) unless otherwise required by law, the Base Bid, any Unit Prices and any Alternate bid in the bid have not been knowingly disclosed by the Bidder and will not knowingly be disclosed by the Bidder prior to the bid opening, directly or indirectly, to any other Bidder who would have any interest in the Base Bid, Unit Prices or Alternate bid; (c) no attempt has been made or will be made by the Bidder to induce any other Person to submit or not to submit a bid for the purpose of restricting competition.
5. The Bidder will execute the Contract Form with the Owner, if a Contract is awarded on the basis of this bid, or turn down the award within a period of 7 (seven) calendar days.
6. Bidder acknowledges that by signing the Bid Form on the Bidder Signature and Information Form on the previous page, that is signing the actual Bid and when submitted as a part of its bid package, shall serve as the Bidder's authorization for the further consideration and activity in the bidding and contract process.
7. All signatures must be original.

Signature

Date

END OF SECTION

SECTION 09 6816 - SHEET CARPETING

PART 1 - GENERAL

1.1 RELATED DOCUMENTS

- A. Drawings and general provisions of the Contract, including General and Supplementary Conditions and Division 01 Specification Sections, apply to this Section.

1.2 SUMMARY

- A. Section Includes:

- 1. Tufted broadloom sheet carpet.

- B. Related Requirements:

- 1. Section 024119 "Selective Demolition" for removing existing floor coverings.
- 2. Section 096513 "Resilient Base and Accessories" for resilient wall base and accessories installed with carpet.

1.3 ACTION SUBMITTALS

- A. Product Data: For each type of product.

- 1. Include manufacturer's written specifications.
- 2. Include manufacturer's written installation recommendations for each type of substrate.
- 3. Include carpet maintenance recommendations as outlined by manufacturer.
- 4. Include plan for recycling the specified carpet at the end of useful life of carpet.

- B. Shop Drawings: For carpet installation, showing the following:

- 1. Seam locations, types, and methods.
- 2. Type of subfloor.
- 3. Type of installation.
- 4. Pattern type, repeat size, location, direction, and starting point.
- 5. Types, colors, and locations of edge, transition, and other accessory strips.
- 6. Transition details to other flooring materials.

- C. Samples: For each of the following products and for each color and texture required. Label each Sample with manufacturer's name, material description, color, pattern, and designation indicated on Drawings and in schedules.

- 1. Carpet: 12-inch- square Sample.
- 2. Exposed Edge, Transition, and Other Accessory Stripping: 12-inch long Samples.

- D. Product Schedule: For carpet. Use same designations indicated on Drawings.

1.4 INFORMATIONAL SUBMITTALS

- A. Qualification Data: For Installer.
- B. Product Test Reports: For carpet, for tests performed by a qualified independent testing agency.

1.5 CLOSEOUT SUBMITTALS

- A. Maintenance Data: For carpet to include in maintenance manuals. Include the following:
 - 1. Methods for maintaining carpet, including cleaning and stain-removal products and procedures and manufacturer's recommended maintenance schedule.
 - 2. Precautions for cleaning materials and methods that could be detrimental to carpet.

1.6 QUALITY ASSURANCE

- A. Manufacturer Qualifications:
 - 1. Demonstrated commitment to sustainability (recycling, reuse, conservation, and source reduction) through a reporting document such as an annual sustainability report that contains third-party verification and confirmation.
- B. Installer Qualifications: An experienced installer who is certified by the International Certified Floorcovering Installers Association at the [Commercial II] [Master II] <Insert description> certification level.
- C. Mockups: Build mockups to verify selections made under Sample submittals, to demonstrate aesthetic effects, and to set quality standards for fabrication and installation.
 - 1. Build mockups at locations and in sizes shown on Drawings.

1.7 DELIVERY, STORAGE, AND HANDLING

- A. Comply with carpet manufacturer's installation recommendations and The Carpet and Rug Institute Installation Standard 104.
- B. Deliver carpet in original mill protective covering with mill register numbers and tags attached.

1.8 FIELD CONDITIONS

- A. Comply with carpet manufacturer's installation recommendations and The Carpet and Rug Institute Standard 104 for temperature, humidity, and ventilation limitations.
- B. Environmental Limitations: Do not deliver or install carpet until spaces are enclosed and weathertight, wet-work in spaces is complete and dry, and ambient temperature and humidity conditions are maintained at levels planned for building occupants during the remainder of the construction period.

- C. HVAC system should be operational and running prior to carpet installation and should remain running after carpet installation.
- D. Do not install carpet over concrete slabs until slabs have cured and are sufficiently dry to allow bond between adhesive and concrete, and concrete slabs should have moisture and pH readings that are within specified tolerance of the adhesive to be used.
- E. Where demountable partitions or other items are indicated for installation on top of carpet, install carpet before installing these items.

1.9 WARRANTY

- A. Special Warranty for Carpet: Manufacturer agrees to repair or replace components of carpet installation that fail in materials or workmanship within specified warranty period.
 - 1. Warranty does not include deterioration or failure of carpet due to unusual traffic, failure of substrate, vandalism, or abuse.
 - 2. Failures include, but are not limited to, the following:
 - a. More than 10 percent loss of face fiber.
 - b. Loss of tuft bind strength.
 - c. Excess static discharge.
 - d. Edge ravel.
 - e. Delamination.
 - f. Where face fiber is 100 percent solution dyed, inability to remove acid-based stains.
 - g. Where face fiber is 100 percent solution dyed, lack of colorfastness to atmospheric contaminants.
 - 3. Warranty Period: **Ten-Year Limited Warranty** from date of Substantial Completion.
 - 4. Installer Warranty: One year.

PART 2 - PRODUCTS

2.1 TUFTED BROADLOOM SHEET CARPET

- A. Basis-of-Design Product:
 - 1. Mohawk Group (The); Mohawk Carpet, LLC.
- B. Color: As selected by Architect from manufacturer's full range.

2.2 INSTALLATION ACCESSORIES

- A. Trowelable Leveling and Patching Compounds: Latex-modified, hydraulic-cement-based formulation provided or recommended by carpet manufacturer.
- B. Trowelable Adhesives: Water-resistant, mildew-resistant, nonstaining, premium grade type to suit products and subfloor conditions indicated, that complies with flammability requirements for installed broadloom sheet carpet and is recommended by carpet manufacturer for

installation. Adhesives must be Green Label Plus Certified by The Carpet and Rug Institute to have low VOC.

- C. Tackless Carpet Stripping (Where a Stretch-In Installation is Required): Water-resistant plywood, in strips as required to match cushion thickness and that comply with manufacturer's modular carpet installation guidelines and/or The Carpet and Rug Institute Installation Standard 104 where applicable.
- D. Seam Adhesive: Hot-melt adhesive tape or similar product recommended by carpet manufacturer for sealing and taping seams and butting cut edges at backing to form secure seams and to prevent pile loss at seams.
- E. Metal Edge/Transition Strips: Extruded aluminum with [mill] <Insert finish> finish of profile and width shown, of height required to protect exposed edge of carpet, and of maximum lengths to minimize running joints.

PART 3 - EXECUTION

3.1 EXAMINATION

- A. Examine substrates, areas, and conditions, with Installer present, for compliance with requirements for maximum moisture content, alkalinity range, installation tolerances, and other conditions affecting carpet performance.
- B. Examine carpet for type, color, pattern, and potential defects prior to installation See manufacturer's requirements for substrate conditions and ambient conditions.
- C. Concrete Slabs: Verify that finishes comply with requirements specified in Section 033000 "Cast-in-Place Concrete" and that surfaces are free of cracks, ridges, depressions, scale, and foreign deposits.
 - 1. Lightweight concrete and gypcrete subfloors may require a primer such as Shaw 9050 or equivalent to reduce surface porosity.
- D. Wood Subfloors: Verify the following:
 - 1. Underlayment over subfloor complies with requirements specified in Section 061600 "Sheathing."
 - 2. Underlayment surface is free of irregularities and substances that may interfere with adhesive bond or show through surface.
 - 3. Unfinished wood should be primed using a liquid latex primer such as Shaw 9050 or equivalent.
- E. For Painted Subfloors: Verify the following:
 - 1. Perform bond test recommended in writing by adhesive manufacturer.
- F. Proceed with installation only after unsatisfactory conditions have been corrected.

3.2 PREPARATION

- A. General: Comply with The Carpet and Rug Institute Installation Standard 104 and with carpet manufacturer's written installation instructions for preparing substrates.
- B. Use trowelable leveling and patching compounds containing a cementitious base with a latex additive, according to manufacturer's written instructions, to fill cracks, holes, depressions, and protrusions in substrates. Fill or level cracks, holes, and depressions 1/8 inch wide or wider, and protrusions more than 1/32 inch, unless more stringent requirements are required by manufacturer's written instructions.
- C. Concrete Substrates: Remove coatings, including curing compounds, and other substances that are incompatible with adhesives and that contain soap, wax, oil, or silicone, without using solvents. Use mechanical methods recommended in writing by adhesive and carpet manufacturers.
- D. Broom and vacuum clean substrates to be covered immediately before installing carpet.

3.3 CARPET INSTALLATION

- A. Comply with The Carpet and Rug Institute Installation Standard 104.
- B. Comply with carpet manufacturer's written instructions and Shop Drawings for seam locations and direction of carpet; maintain uniformity of carpet direction and lay of pile. At doorways, center seams under the door in closed position.
- C. Do not bridge building expansion joints with carpet.
- D. Cut and fit carpet to butt tightly to vertical surfaces, permanent fixtures, and built-in furniture including cabinets, pipes, outlets, edgings, thresholds, and nosings. Bind or seal cut edges as recommended by carpet manufacturer.
- E. Extend carpet into toe spaces, door reveals, closets, open-bottomed obstructions, removable flanges, alcoves, and similar openings.
- F. Maintain reference markers, holes, and openings that are in place or marked for future cutting by repeating on carpet as marked on subfloor. Use nonpermanent, non-staining marking device.

3.4 CLEANING AND PROTECTION

- A. Perform the following operations immediately after installing carpet:
 - 1. Remove excess adhesive, seam sealer, and other surface blemishes using cleaner recommended by carpet manufacturer.
 - 2. Remove yarns that protrude from carpet surface.
 - 3. Vacuum carpet using commercial machine with face-beater element.
- B. Protect installed carpet to comply with The Carpet and Rug Institute Installation Standard 104.

- C. Protect carpet against damage from construction operations and placement of equipment and fixtures during the remainder of construction period. Use protection methods recommended in writing by carpet manufacturer and carpet adhesive manufacturer.

END OF SECTION 096816



BLUE ROOM ARCHITECTURE & DESIGN, P.S.

PO BOX 628
SPOKANE VALLEY, WA 99037
(509) 456-6800
www.brdstudio.com

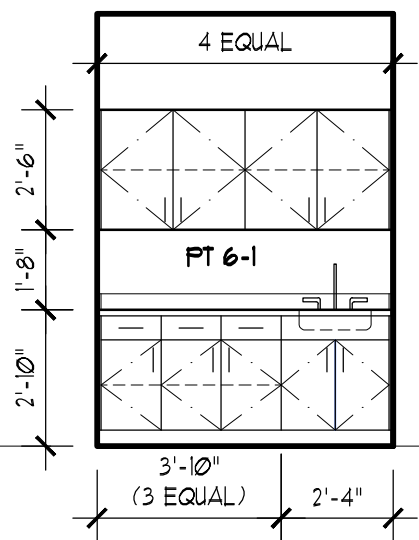
INTERIOR REMODEL FOR:
ST MARIES AMBULANCE BUILDING
LOWER LEVEL REMODEL

720 SOUTH 9TH STREET
ST MARIES IDAHO 83661

PROJECT NUMBER: 16006
DATE: 3/19/2018
DRAWN: ALM

AC-1

© 2018 BLUE ROOM ARCHITECTURE & DESIGN, P.S.



5 CONF RM - 101S

A6.1 COUNTERTOP/BACKSPLASH FLAM 8-2
BASE/UPPER CABINETS FLAM 8-3



BLUE ROOM ARCHITECTURE & DESIGN, P.S.

PO BOX 628
SPOKANE VALLEY, WA 99037
(509) 456-6800
www.brdstudio.com

INTERIOR REMODEL FOR:
ST MARIES AMBULANCE BUILDING
LOWER LEVEL REMODEL

720 SOUTH 9TH STREET
ST MARIES IDAHO 83861

PROJECT NUMBER: 16006
DATE: 3/19/2018
DRAWN: ALM

AC-2

© 2018 BLUE ROOM ARCHITECTURE & DESIGN, P.S.

EXISTING TO
REMAIN

EXISTING CMU
TO REMAIN

10
7
TYP

TOP OF INFILL
10'-0" +/- AFF

DOOR/WINDOW HEAD
7'-2" AFF

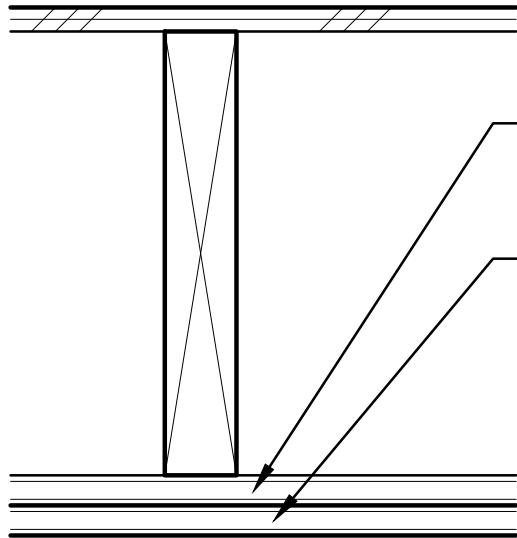
WINDOW SILL
3'-2" AFF

EXISTING GRADE
0'-0" AFF

A EAST ELEVATION

A4.1

SCALE: 1/4" = 1'-0"



BASE LAYER $\frac{5}{8}$ " TYPE 'X' GYPSUM BOARD APPLIED AT RIGHT ANGLES TO JOISTS WITH $1\frac{1}{4}$ " TYPE W OR S DRYWALL SCREWS AT 24" OC.

FACE LAYER $\frac{5}{8}$ " TYPE 'X' GYPSUM BOARD APPLIED AT RIGHT ANGLES TO JOISTS WITH $1\frac{3}{8}$ " TYPE W OR S DRYWALL SCREWS AT 12" OC AT JOINTS AND INTERMEDIATE JOISTS AND $1\frac{1}{2}$ " TYPE G DRYWALL SCREWS 12" OC PLACED 2" BACK ON EITHER SIDE OF END JOISTS. JOINTS OFFSET 24" FROM BASE LAYER JOINTS.

CEILING PROVIDES ONE HOUR FIRE RESISTANCE PROTECTION FOR FRAMING, INCLUDING TRUSSES.

FLOOR-CEILING ASSEMBLY

1 HOUR RATED - GA FILE NO. FC 5406 OR SIMILAR



BLUE ROOM ARCHITECTURE & DESIGN, P.S.

PO BOX 628
SPOKANE VALLEY, WA 99037
(509) 456-6800
www.brdstudio.com

INTERIOR REMODEL FOR:

ST MARIES AMBULANCE BUILDING
LOWER LEVEL REMODEL

720 SOUTH 9TH STREET
ST MARIES IDAHO 83861

PROJECT NUMBER: 16006
DATE: 3/19/2018
DRAWN: ALM

AC-3

© 2018 BLUE ROOM ARCHITECTURE & DESIGN, P.S.